



# Parathyroid Hormone (PTH) (ABT-PTH) mouse mAb

<b>Catalog No</b>	YP-Ab-15322
<b>Isotype</b>	IgG
<b>Reactivity</b>	Human; Predict react with Mouse, Rat
<b>Applications</b>	IHC;IF
<b>Gene Name</b>	PTH
<b>Protein Name</b>	Parathyroid hormone (PTH) (Parathormone) (Parathyrin)
<b>Immunogen</b>	Synthesized peptide derived from human Parathyroid Hormone (PTH)
<b>Specificity</b>	This antibody detects endogenous levels of human Parathyroid Hormone (PTH). Heat-induced epitope retrieval (HIER) TRIS-EDTA of pH8.0 was highly recommended as antigen repair method in paraffin section
<b>Formulation</b>	Liquid in PBS containing 50% glycerol, 0.5% BSA and 0.02% sodium azide.
<b>Source</b>	Mouse, Monoclonal/IgG1, Kappa
<b>Purification</b>	The antibody was affinity-purified from mouse ascites by affinity-chromatography using specific immunogen.
<b>Dilution</b>	IHC-p 1:100-500. IF 1:50-200
<b>Concentration</b>	1 mg/ml
<b>Purity</b>	≥90%
<b>Storage Stability</b>	-20°C/1 year
<b>Synonyms</b>	
<b>Observed Band</b>	
<b>Cell Pathway</b>	Secreted.
<b>Tissue Specificity</b>	
<b>Function</b>	disease:Defects in PTH are a cause of familial isolated hypoparathyroidism (FIH) [MIM:146200]. FIH exist both as autosomal dominant and recessive forms of hypoparathyroidism.,function:PTH elevates calcium level by dissolving the salts in bone and preventing their renal excretion.,online information:Parathyroid hormone entry,similarity:Belongs to the parathyroid hormone family.,
<b>Background</b>	This gene encodes a member of the parathyroid family of proteins. The encoded preproprotein is proteolytically processed to generate a protein that binds to the parathyroid hormone/parathyroid hormone-related peptide receptor and regulates blood calcium and phosphate levels. Excess production of the encoded protein, known as hyperparathyroidism, can result in hypercalcemia and kidney stones. On the other hand, defective processing of the encoded protein may lead to hypoparathyroidism, which can result in hypocalcemia and numbness. Alternative splicing results in multiple transcript variants. [provided by RefSeq, Oct 2015],

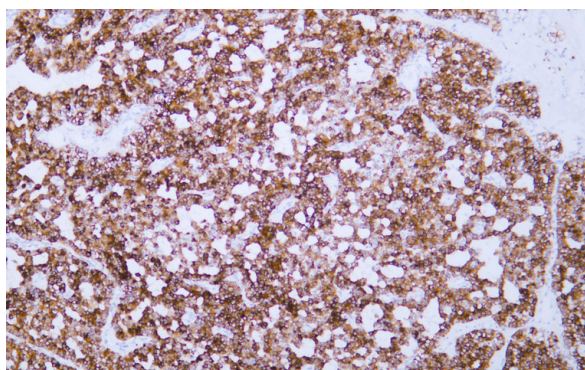
**matters needing attention**

Avoid repeated freezing and thawing!

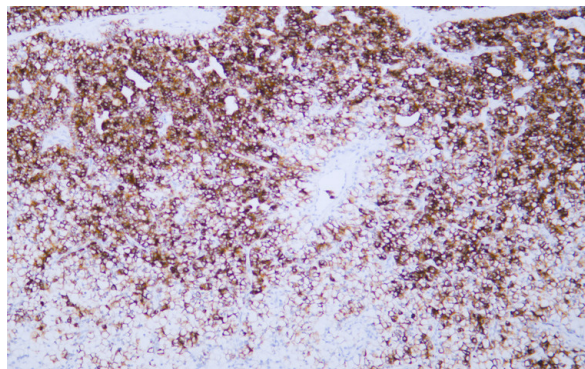
**Usage suggestions**

This product can be used in immunological reaction related experiments. For more information, please consult technical personnel.

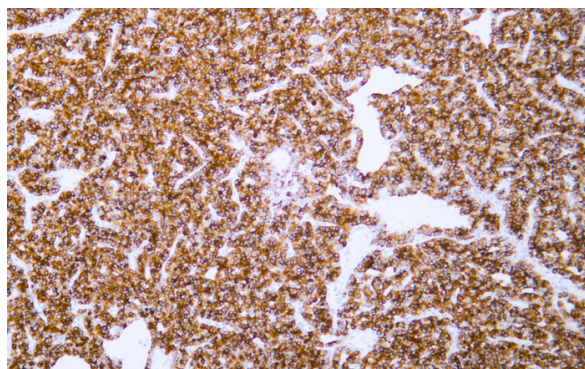
## Products Images



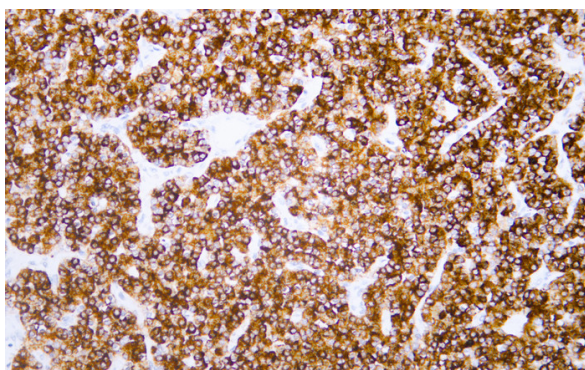
Human parathyroidoma tissue was stained with Anti-Parathyroid Hormone (ABT-PTH) Antibody



Human parathyroidoma tissue was stained with Anti-Parathyroid Hormone (ABT-PTH) Antibody



Human parathyroidoma tissue was stained with Anti-Parathyroid Hormone (ABT-PTH) Antibody



Human parathyroidoma tissue was stained with Anti-Parathyroid Hormone (ABT-PTH) Antibody